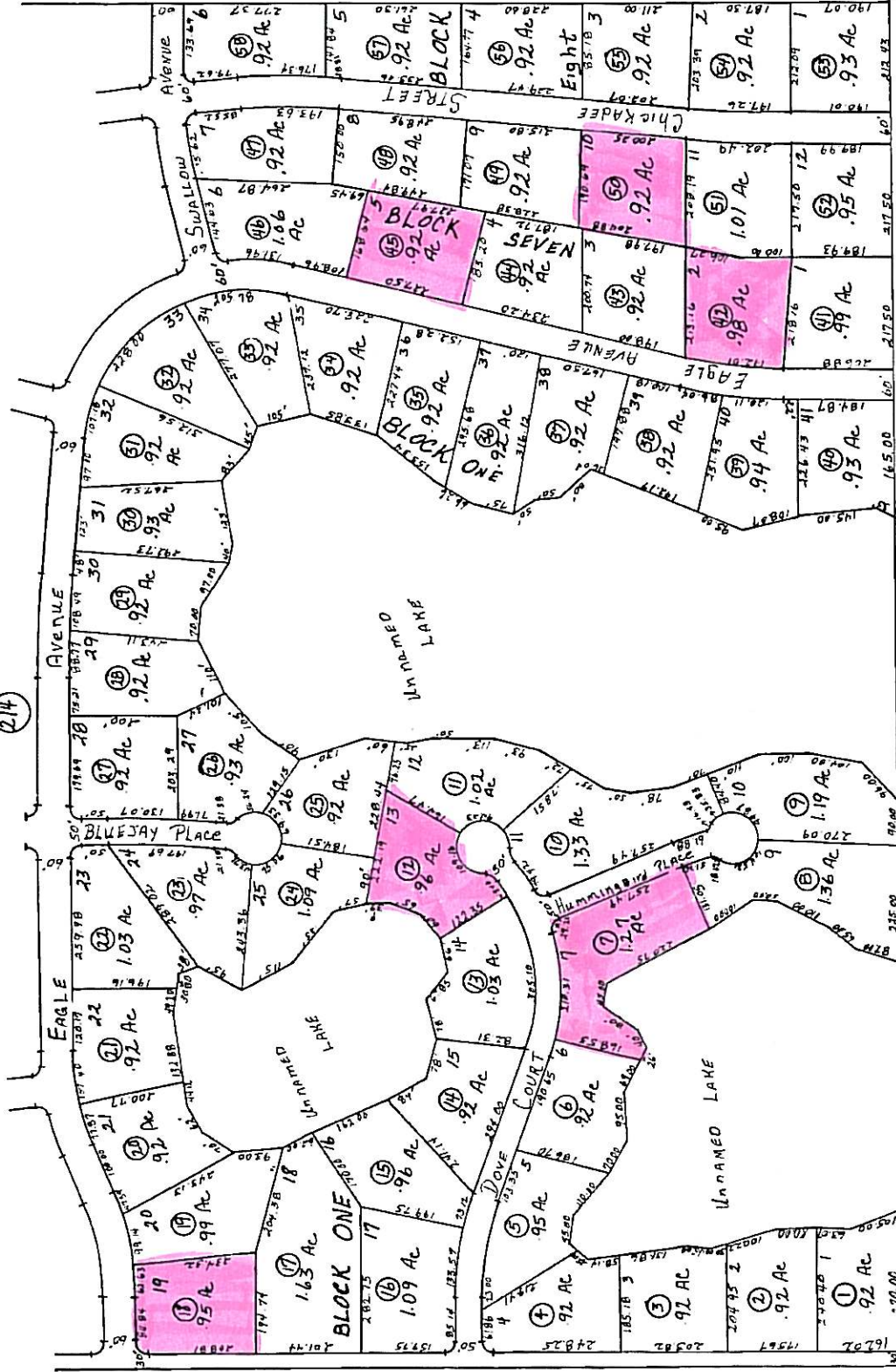


SE 1/4 SW 1/4 & SW 1/4 SE 1/4 SEC. 6, T7N, R11W, S.B.&M.



DON'S PLACE SUB.

(K-83-4)

AMENDED (K-83-44)

NOTE - Assessor's Block Numbers Shown in Ellipses
Assessor's Parcel Numbers Shown in Circles

Assessor's Map
Kenai Peninsula Borough, Alaska

(211)

(211)

(21)